

COMACO LANDSCAPE MANAGEMENT PROJECT

**Making Conservation
profitable**



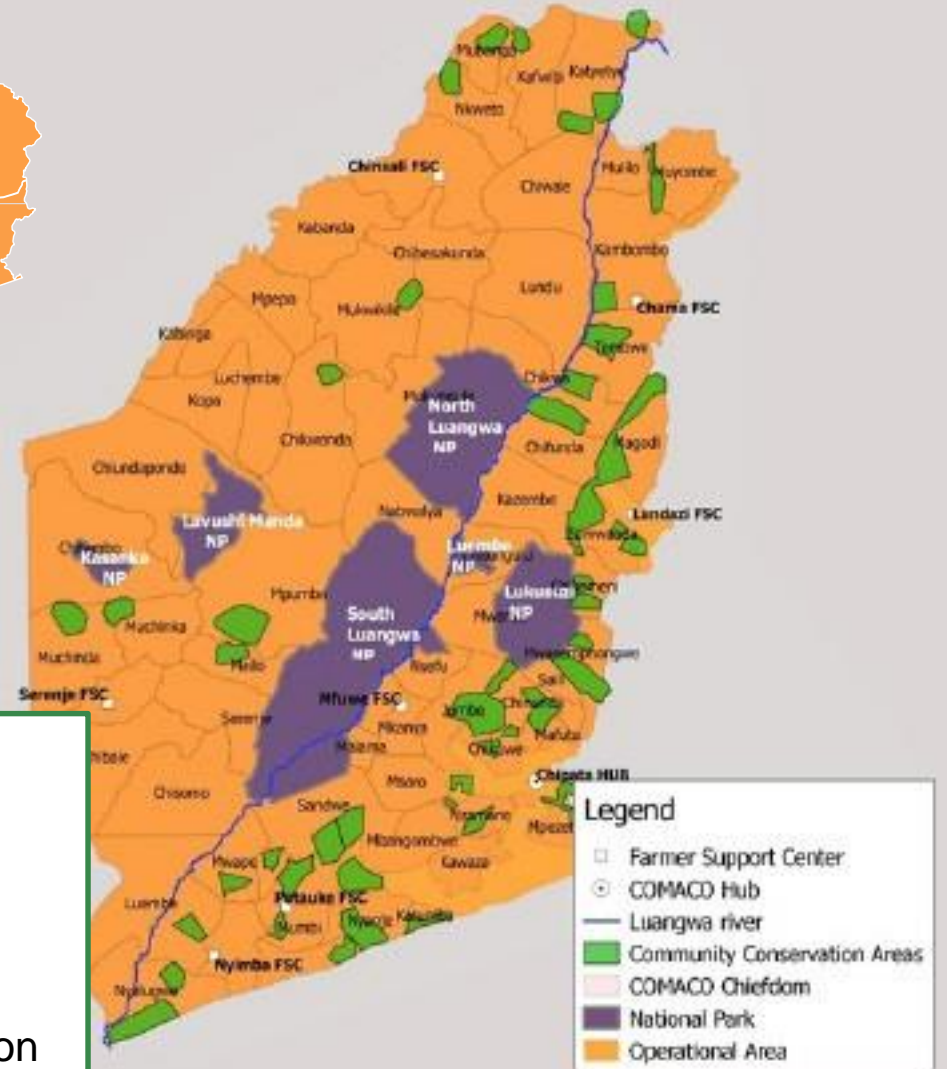
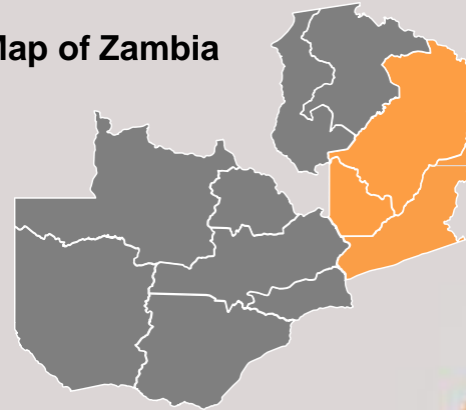
January 2020



About COMACO

COMACO was founded in 2003 with a mission to train small scale farmers in the Luangwa Valley to produce healthy, organic foods while reducing poverty and preserving watershed, forest and wildlife that will contribute to reducing carbon emission.

Map of Zambia



Affected Coverage

- 148,386km² Area
- 3 Provinces
- 20 Districts
- 72 Chieftom
- 4,482,213 population

Severe natural resource exploitation led to escalating environmental degradation and poverty trap in the Luangwa valley

Rampant deforestation and degradation

Wildlife poaching

Unsustainable farming practices No marketplace for farmer produce



Annual household income



Annual Carbon emission



Annual reduction in crop yield



Forest cover lost annually

Our solution enables adoption of best practices in sustainable forestry and land management that mitigate the impact of climate change



Sensitize and train small- farmers to be stewards of the land



Support and monitor their adoption



Provide premium market for surplus crop through Its Wild!



Establish community game ranch and conservation areas

How our model works

- Intact community Forest
- Sustainable agriculture
- Land Management

Verification process

VCU

Sold carbon

Carbon benefit

Farmer Extension

Climate Smart Agriculture

Crop

Value addition

It's Wild!

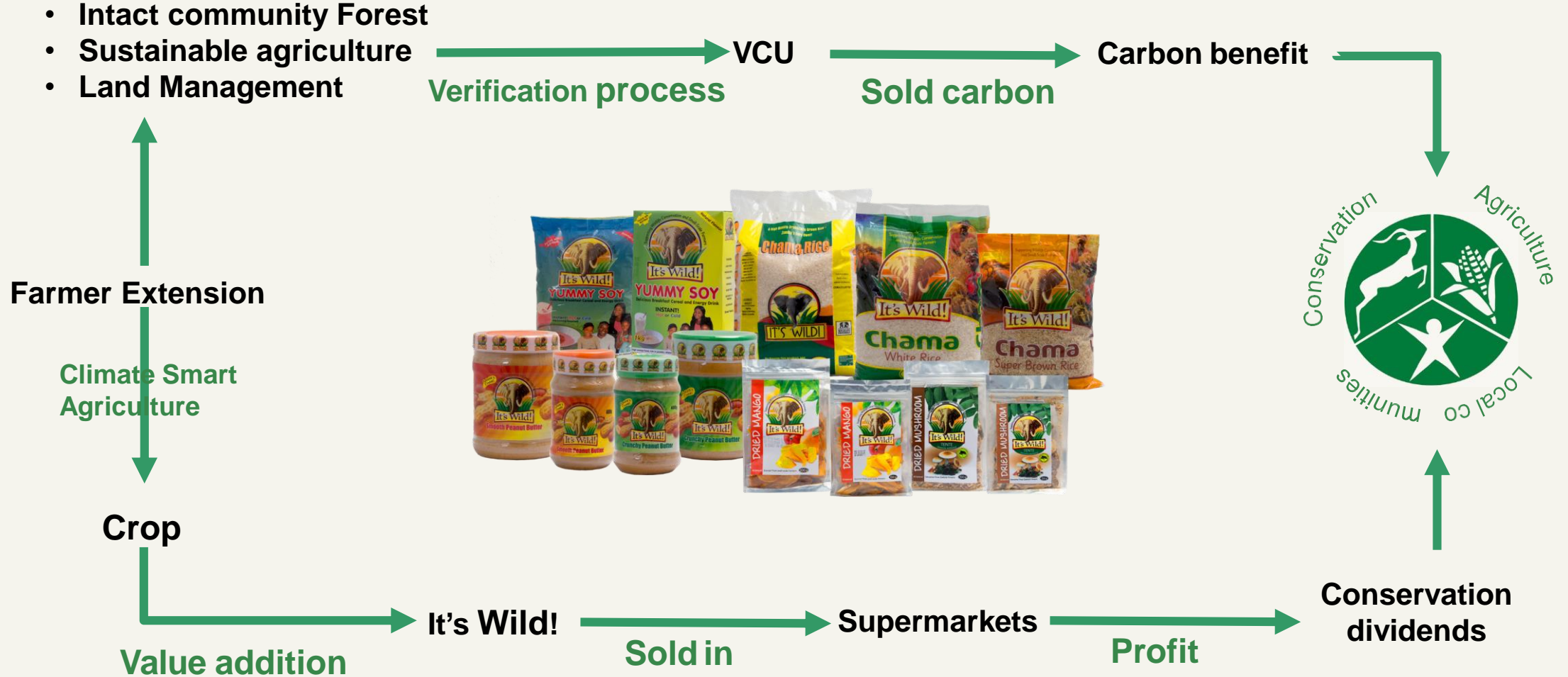
Sold in

Supermarkets

Profit



Conservation dividends



Our Impact on the small-scale farming community (2003-2018)



Farmer Participation

891,800 indirect
beneficiaries



Carbon Revenue

USD 2,180,000



Annual Income

From \$79 to
\$345



Food Security

11% to 84% farmers

Our Impact on the Climate



Sustainable farming practices

From 12% in 2003 to 83% in 2018



Carbon Sequestration

768,000 t
CO₂e from 2013 to 2018



Deforestation

from 4.3% in 2010 to
1.8% in 2018

A savanna landscape with a large elephant in the center, surrounded by trees with yellow and green foliage. The elephant is standing in a clearing, facing slightly to the right. The background is filled with a dense forest of trees, some with vibrant yellow and orange leaves, suggesting an autumn or dry season. The ground is covered in dry, brownish grass and scattered branches.

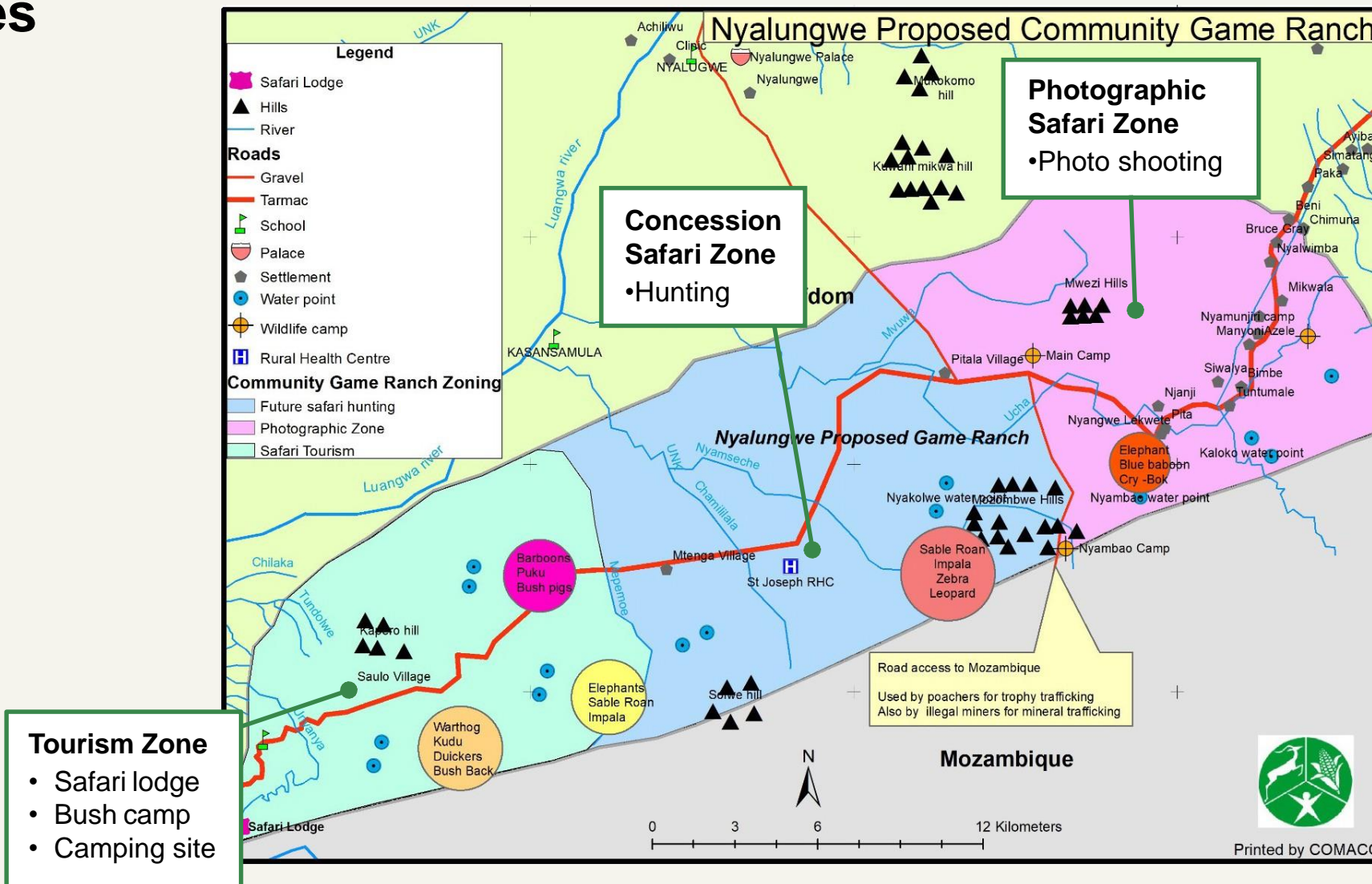
COMMUNITY GAME RANCH

**A community-led land management
approach**

Game Ranch Zones

Management Zones

- Tourism zone
- Production Zone
- Safari Hunting Zone
- Photographic safari Zone



Improved Community Incentives & Environmental Benefit

- Income generation via forest products,
- Carbon credit payment
- Community Conservation Biodiversity CCB payment
- Stronger sense of local culture and pride for respecting the land
- Improved biodiversity forest cover, wildlife, reduction in CO2 emissions



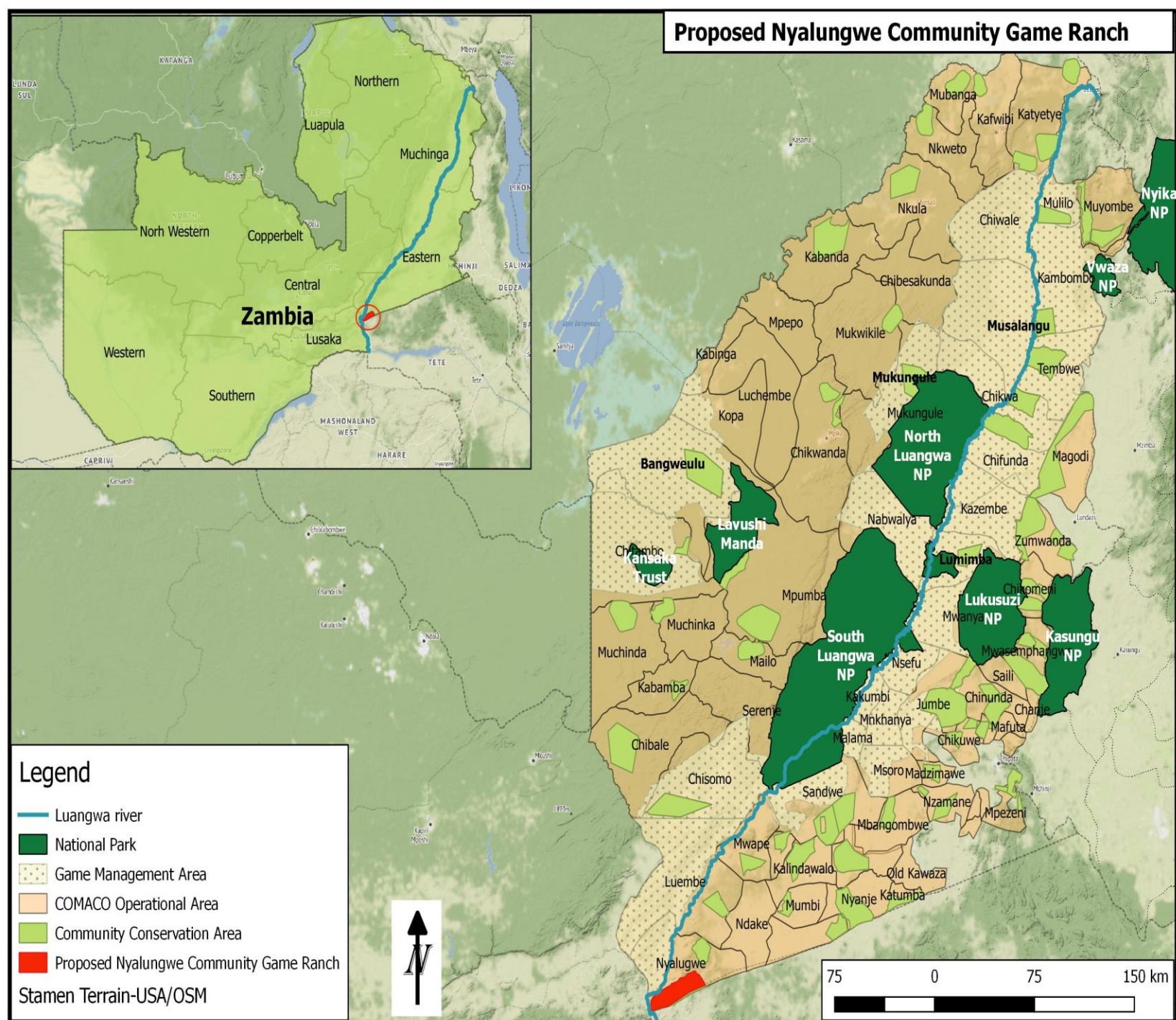
Each Community Manages their own Game Ranch

- Local leaders and game ranch committee
- Support from COMACO and Government Department
- Community Game Management Plans (CGMP)



Community Game Ranch reward to conservation champion chiefdom

- A conservation champion chiefdom
- Demonstrated conservation leadership
- 42,000 hectares managed as community conservation area



Initiative Outcome (by 2023)

US 2 MN

**INCOME FROM CARBON
CREDITS ANNUALLY**

\$550

**ANNUAL HOUSEHOLD
INCOME**

90%

**ADOPTION OF
SUSTAINABLE
FARMING PRACTICES**

230,000

**FARMER PARTICIPATION IN
COMACO**

750,000 HA

**CONSERVATION AREAS COMMITTED
TO CARBON REVENUE GENERATION**

What we are looking for

USD 500,000 in sponsorship or grants to create a functioning model community game ranch that will be scaled to other community conservation areas in the Luangwa Valley in the future



DISTRIBUTING BEEHIVES



MANGO & MUSHROOM DRYERS



SATELLITE REMOTE SENSING



WILDLIFE CAMPS



FIELD EQUIPMENT



OPERATIONAL COST

Contact Us

Angel Makungu

Contact: +260966310973

Email: amakungu@itswild.org



January 2020

